

**BLAUPUNKT**



RADIO AM/FM ANTENNA  
**AUTO FUN PRO 2**



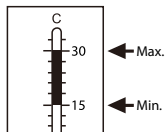
*Enjoy it.*

**Operating and Installation Instructions**

## CAUTION

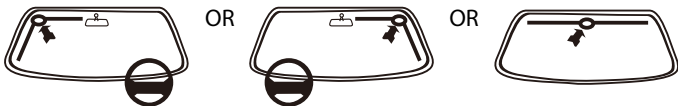
---

### 1. Temperature



2. Do not touch the adhesive surface of the carrier paper, the receptor and the mounting disc after peeling off the protective foil. The adhesive will stick immediately on contact and cannot be repositioned.
3. Ensure mounting points are dry and clean by using windscreen cleaner or alcohol with the provided Windscreen Cleaning Cloth to clean the windscreen before installation.

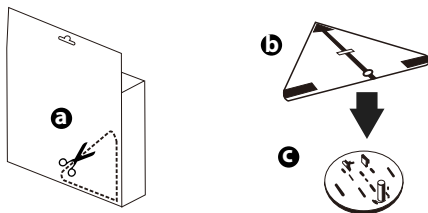
### 4. Recommended installation location



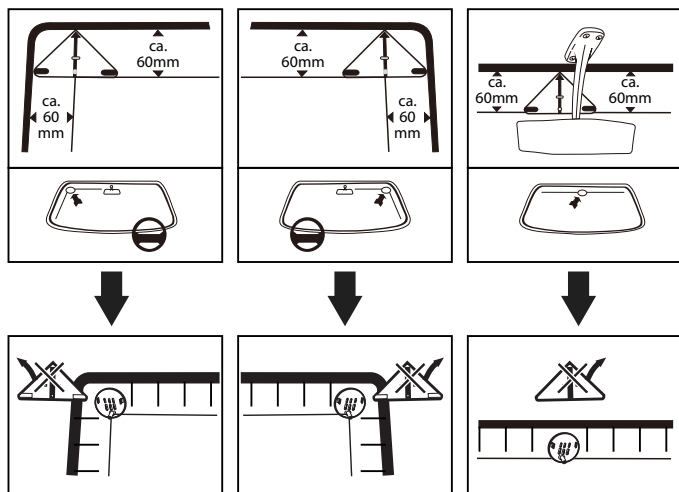
5. The Aerial is not suitable for mounting on metallic-coated heat-protection windows

# INSTALLATION

## 1. Mounting Jig & Disc



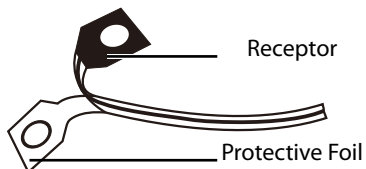
## 2. Disc Position



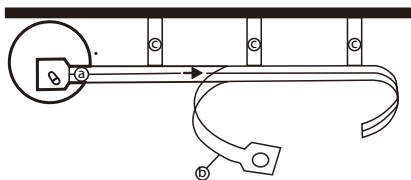
## INSTALLATION

---

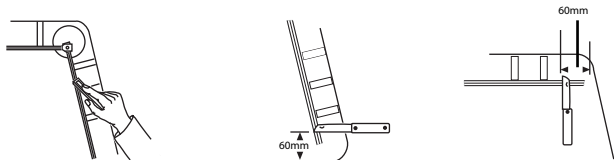
### 3. Remove Protective Foil from Receptor



### 4. Connect Receptor



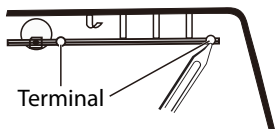
### 5. Smoothen and trim the excessive Receptor



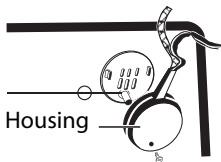
# INSTALLATION

---

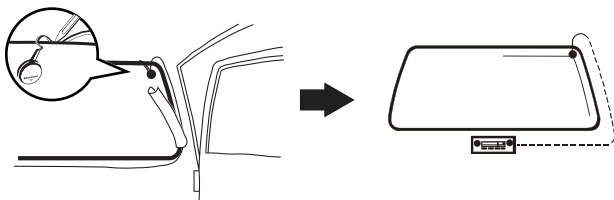
## 6. Terminal position



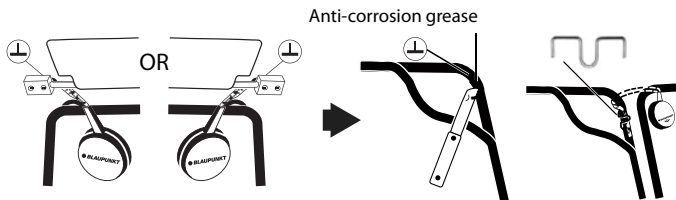
## 7. Housing position



## 8. Cover the Aerial



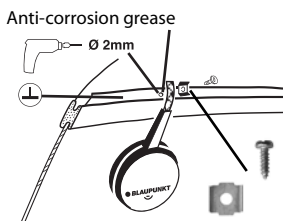
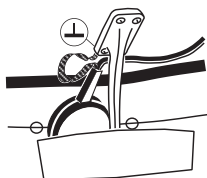
## 9. Corner ground connection



## INSTALLATION

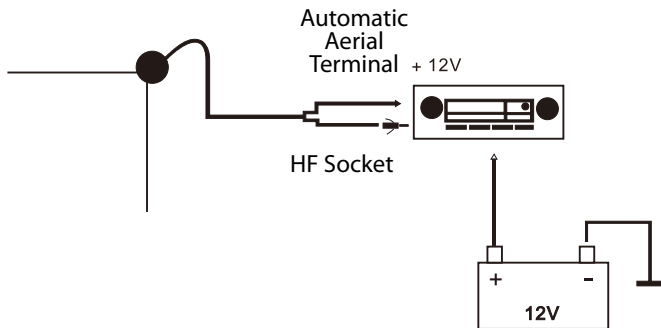
---

### 10. Rear-view mirror ground connection



## CONNECTION DIAGRAM

---



Features :

### **Adhesive active windscreen antenna for radio reception**

- Optimum reception performance thanks to built-in antenna amplifier
- Frequency range : AM/FM 0.15 – 6.2MHz & 76 – 108MHz
- Straight antenna connector
- Cable length 2905mm
- RG 178 cable

