

Trouble Shooting

Nature of issue	Possible causes
No sound and image	Power disconnected or the device off
Black screen	Undervoltage
Abnormal start	1. Press the power key and then press and hold it for 3s to shut it down 2. Press the reset key to restart the system
WIFI cannot connected	Refresh the network or close and re-open WIFI
Color shift	Wrong function menu setup or incorrect model
No power	1. Incorrect voltage: inspect connection cables and verify there's power at the connector with DMM 2. Blown Fuse: replace FUSE with exact specification
Failure to read HD/USB/TF/audio/video files	1. Re-insert the HD/USB/TF into the port at the side of the device 2. Select options in audio and video player
Bluetooth headphone – no audio	1. Long press the headphone power key until the red and blue light blinks alternately, re-pair the headphone 2. Make sure the display device is paired with only one headphone 3. Check battery charge level of headphone

Attention

1. Do not store the display device wet or humid environment, to avoid fire hazard and electrical damage.
2. Do not attempt to service the device on your own. Please shut down the device and notify BPIN service immediately. In case the display device needs to be serviced , BPIN authorized service personnel will be able to handle it
3. Keep the device away from moisture, dust and oil, and do not expose it to direct sunlight.
4. Do not wipe or clean the display device with any harsh or abrasive cleaning agents. Please clean the device with a soft cloth.
5. Please keep the device in appropriate environment (storage temperature:-20°C - 65 °C and operation temperature:- 10 °C - 55 °C.
6. Please ensure the display device is installed in an environment that does not affect the functioning of other devices around it.
7. For safety reasons, please install the display on the front seat headrest with the display screen only visible to rear seat passengers. In most countries it is illegal and a violation of motoring laws to have the display mounted on the front dash where moving images are visible to the driver and front passenger.
8. Power supply: DC 12V

Notice:

The display screen may have some brighter than surrounding spots, this is a natural trait of the screen and does not mean that the screen has an issue.

BPIN Private Limited

47, Atlanta Society, Nariman Point, Mumbai- 400 021. India.

Toll Free: 1800 209 6820 | info@blaupunktcar.in | www.blaupunktcar.in

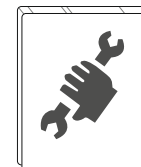


BP RSE AD 10.6
ANDROID TOUCHSCREEN
Rear Seat Entertainment

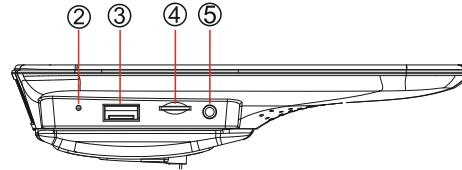


Enjoy it.

1102158106-001



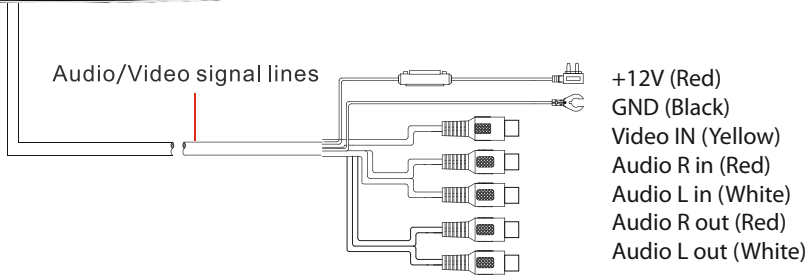
Device



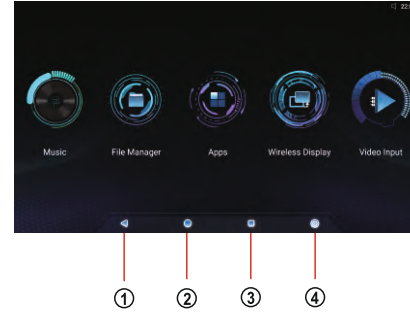
1. Power ON/OFF (shut off screen)
2. Reset
3. USB port

4. TF card slot
5. Earphone jack

Wiring Diagram



Desktop Application



1. Return to previous interface
2. Return to the home page
3. Recent visit record
4. Setting

Functional parameters

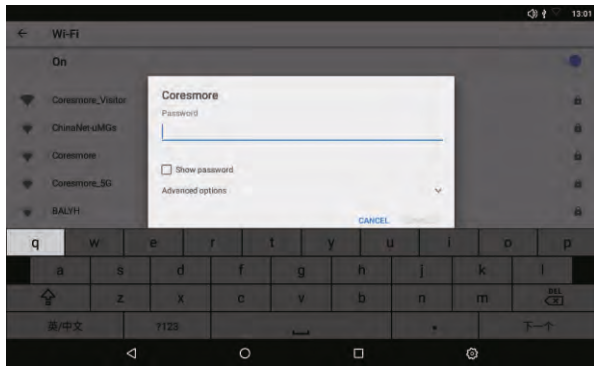
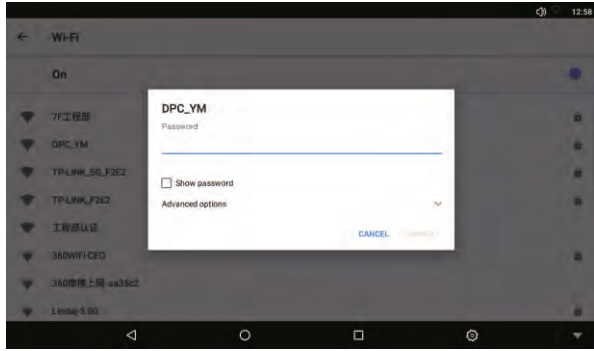
High definition panel	10.1 " 1920(W)*(RGB)*1080(H)
WIFI Data Rate	802.11 b/g/n
Miracast	Connect to mobile phone via wifi
Bluetooth transmitter	Support Bluetooth version 5.0
Audio Formats Supported	MPEG/Windows Media/AAC/WAV/OGG/AMR/MIDI etc.
Video Formats Supported	MPEG-1/2/MPEG-4/MP4/H 265/RMVB/WMV/V0B/VC-1 etc.
Image Formats Supported	JPEG/BMP/PNG/GIF/WEBP
USB	Support high-speed USB 2.0 Host
TF Card	Support high-speed SDIO 3.0 and the maximum capacity of 64 GB
FM Transmitter	Supports stereo audio emission of FM and optional frequency points 88MHz - 108MHz
Audio	Supports stereo audio input, earphone output and built-in 2 x 2W @ 8 D Speaker
Supply Voltage	12 V
Supply current	Max. 800MA
Operating temperature	-10° C - 55° C
Storage temperature	-20° C - 65° C

Build Parameters

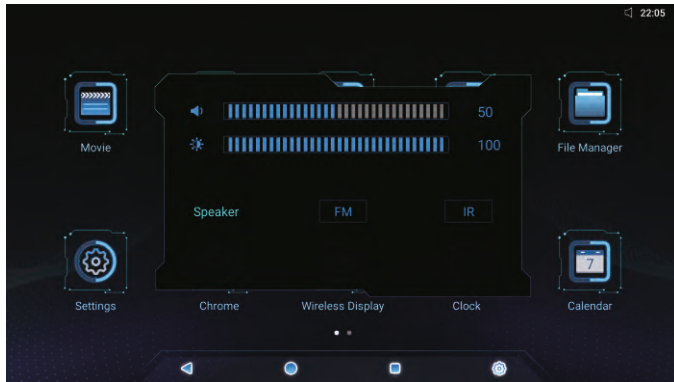
Domain Frequency	Octa core 64 bit processor
RAM	2GB
Storage	16GB
Operating System	Android 9.0

Setup

1. Wi Fi setting: Open Wi Fi , the system will automatically search for nearby wireless networks select the wireless network name that you want, enter the password screen, enter the correct password and click connect As shown below:



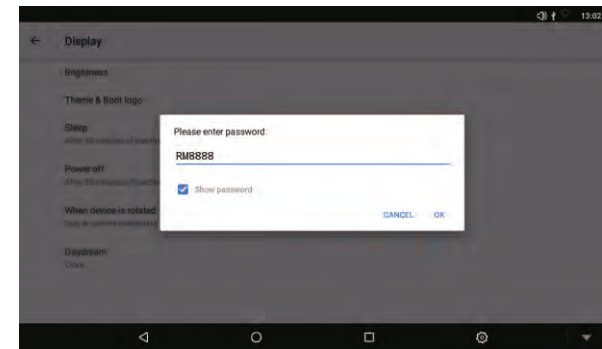
2. Click the application icon in the right corner of the main interface. After clicking, the sub-interface will pop up on the main interface;the sub-interface has speakers, FM, brightness control options



3. Video Settings: To enter video options, touch the video player icon, users have options according to icon on the screen, click on the bottom right corner, a pop-up displaying setting options as following will appear:



4. Theme & Start-Up Screen: Click to enter, the sub-interface "Please enter password:" will pop up. Enter the password "RM8888"; to set the theme and start-up screen. Depending on the model, user can select based on options displayed. Please follow steps shown below to select your option:



AVfunction

Click the AV icon on the main interface to enter the video input interface, the following picture needs to select Video and Audio input source; if the correct channel is connected, then AV video input; if there is no input source, it will pop up: Please access the video signal, the interface is as shown below.



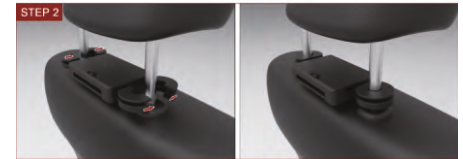
Specifications:

- Ultra - thin 10.1" Capacitive Touch Screen
- Android 9.0 OS
- Digital IPS screen, 64-bit true colour
- ARM Cortex-A55, 2.0 GHz ,Octa-core
- 2GB RAM - DDR4
- Screen Resolution: 1920 x 1080
- HDMI Input
- Mira Cast for Phone Mirroring
- USB 2.0 / Micro SD (Max 32 GB)
- Bluetooth for Headphone
- Built-in Speakers
- Built-in Wi-Fi Support 802.11 b/g/n
- Headphone out
- AV-in - 1
- Audio out - 1
- FM/IR Transmitter
- Power Supply: DC 12 V

Bracket accessories and installation



Step 1: Please make sure the switch position is set to "unlock"



Step 2: Tight the half-round plastic bracket



Step 3: Please insert the U-Plug into the bracket lock



Step 4: Connect the back of unit with the mount part of the bracket, then lock them as a complete unit with provided screws.



Step 5: Cover the screws with the plastic provided covers



Step 6: Insert the display device into the bracket on the headrest



Step 7: Please move the button from "unlock" to "lock"