

2 IN 1 AIR COMPRESSOR / INFLATOR

BLAUPUNKT

TYRE INFLATOR

TIF 21 DA - 12V

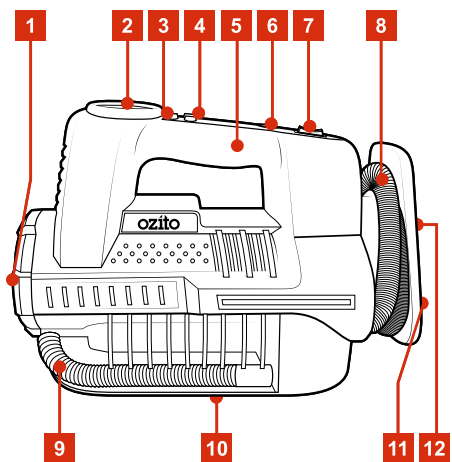
Suitable for Car, Motorcycle, Bicycle
and other Sports equipment



BPIN Private Limited
47, Atlanta Society, Nariman Point, Mumbai - 400 021. Maharashtra. India.
Toll Free: 1800 209 6820 | info@blaupunktcar.in | Shop Online at www.blaupunktcar.in

Enjoy it.

2 IN 1 AIR COMPRESSOR / INFLATOR



- | | | |
|----------------------------|---------------------------|----------------------------|
| 1. LED Torch | 5. Carry Handle | 9. High Volume Air Hose |
| 2. Digital Display | 6. Light Button | 10. 12V Adaptor |
| 3. Pressure Units Button | 7. On/Off Switch | 11. High Volume Air Outlet |
| 4. Preset Pressure Buttons | 8. High Pressure Air Hose | 12. High Volume Air Inlet |

Setup and Preparation

1. Adaptors & Air Hoses



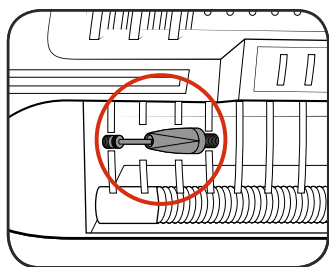
WARNING: Ensure the device is switched off and disconnected from the power supply before performing any of the following steps.

Removing Adaptors

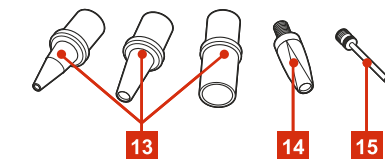
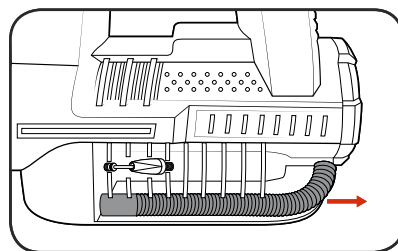
The compressor unit has 5 adaptors to suit a range of inflation applications. All the adaptors are secured in either the compartment on the side or base of the device.

Side Compartment

1. The general purpose adaptor & ball adaptor are stored in the side compartment.



2. The high volume air hose is also stored on the side of the device and can be removed by sliding out.



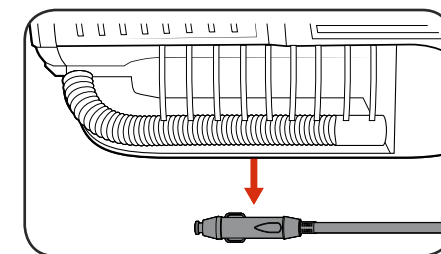
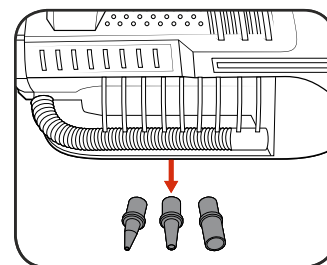
ACCESSORIES

13. High Volume Adaptors
14. General Purpose Adaptor
15. Ball Adaptor

2 IN 1 AIR COMPRESSOR / INFLATOR

Base Compartment

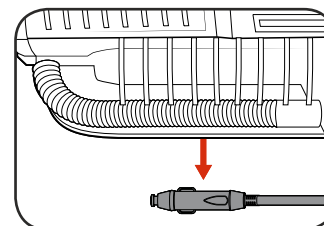
1. The 3 high volume adaptors are stored in the compartment in the base.
2. The 12V socket is also stored in the compartment in the base.



2. Switching ON & OFF

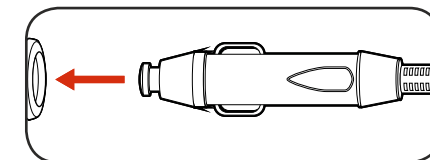
Connecting to a 12V outlet

1. Remove the 12V socket from the base of the device.



2. Connect the 12V socket to a 12V DC outlet which can be found in your vehicle.

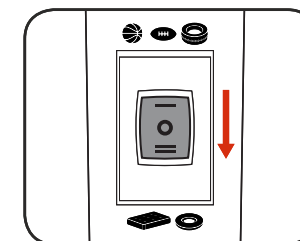
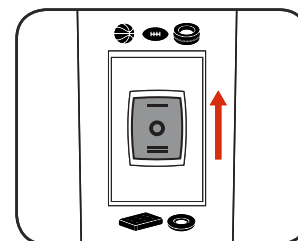
Note: Check car outlet for compatibility - power rating of 120W.



Switching On and Off

The 2 in 1 Air compressor Inflator features 2 operating modes which are high pressure or high volume. High Pressure Mode allows you to inflate items that require high pressure such as sporting equipment or car and bike tyres. High Volume Mode is suitable for large volume items such as air bed or pool toys.

1. To operate in high pressure mode, press the on/off switch forward into mode "I".
2. To operate in high volume mode, press the on/off switch backward into mode "II".



WARNING: Compressed air can be dangerous. Never point the outlet nozzle towards any part of your body or another person.

2 IN 1 AIR COMPRESSOR / INFLATOR

3. Controls

Connecting to a 12V outlet

1. To turn the LED light on, press the light button in.
2. To turn the LED light off, press the light button again.

Note: The compressor must be connected to a power source for the LED light to work.

Digital Display (PSI / BAR / KPa)

The digital pressure reading can be switched between PSI, BAR and KPa to match the requirements on the item being inflated. While a high pressure item is inflated, the current air pressure will be displayed on the digital display.

1. To switch between the 3 pressure units, press the pressure units button.

Preset Pressure

A desired pressure can be preset and the compressor will automatically shut-off once the pressure is reached. The preset pressure must be set before starting the device.

1. Press the (+) button to increase the preset pressure.
2. Press the (-) button to decrease the preset pressure.

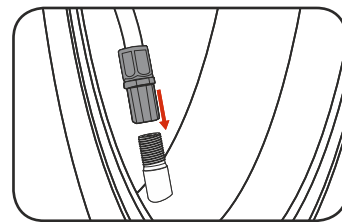
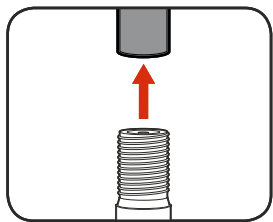
Operation

4. Inflating Tyres



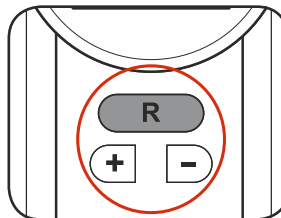
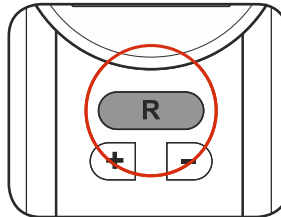
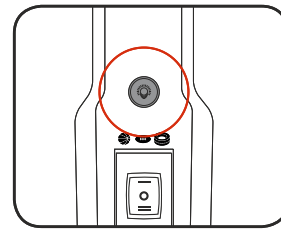
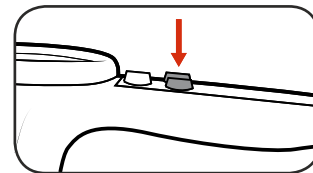
IMPORTANT: Before connecting or disconnecting accessories, always make sure that the compressor is off.

1. Unscrew the cap on the tyre air valve.
2. Attach the air hose by screwing the end of the hose in a clockwise direction.



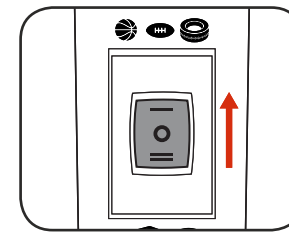
3. Adjust the preset pressure to the recommended pressure using the increase (+) and decrease (-) pressure buttons.

NOTE: The required pressure should be written on the side wall of the tyre.

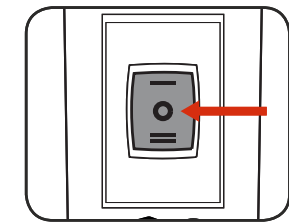


2 IN 1 AIR COMPRESSOR / INFLATOR

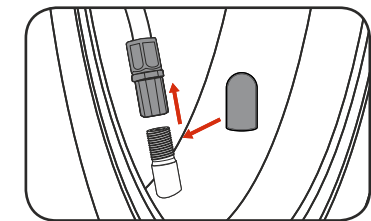
4. Press the on/off switch forward into mode "I" to inflate high pressure items.



5. Once the preset pressure is reached, the device will automatically shut off. After the device has automatically shut off, press the on/off switch into the off position "0".

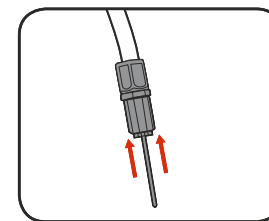


6. Unscrew the air hose and tighten the plastic cap onto the tyre air valve.

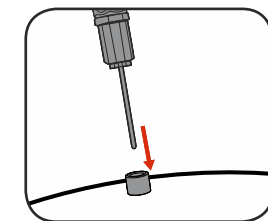


5. Inflating Sporting Equipment

1. Affix the ball or general purpose adaptor into the end of the air hose.

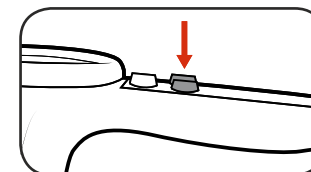


2. Insert the adaptor into the item to be inflated.

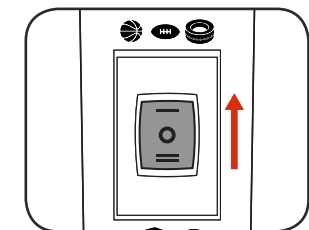


3. Adjust the preset pressure to the recommended pressure using the increase and decrease pressure buttons.

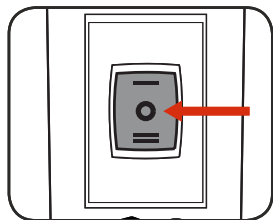
NOTE: The required pressure should be written on the item.



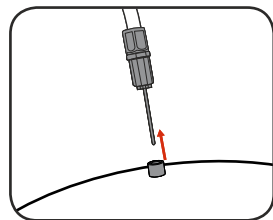
4. Press the on/off switch forward into mode "I" to inflate high pressure items.



5. Once the preset pressure is reached, the device will automatically shut off. After the device has automatically shut off, press the on/off switch into the off position "0".



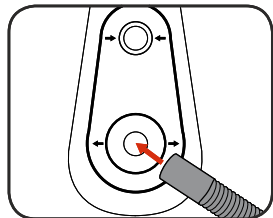
- 6 Remove the adaptor from the inflated item.



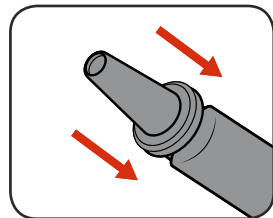
6. Inflating High Volume Items

The air compressor allows for quick and easy inflation of high volume objects such as air mattresses and pool toys.

1. Remove the high volume air hose from its storage position and insert into the device air outlet.

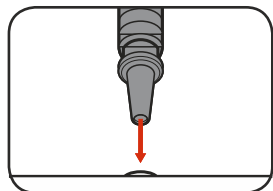


2. Attach 1 of the 3 high volume adaptors to the high volume air hose.

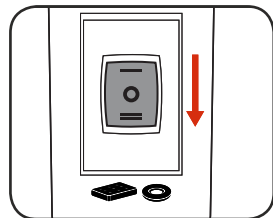


3. Insert the adaptor into the inflatable item.

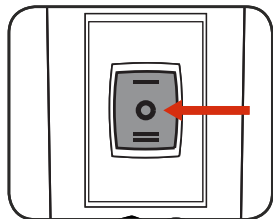
Note: If the inflatable item has a cap or air lock, ensure it is removed or unlocked to allow air to flow into the item.



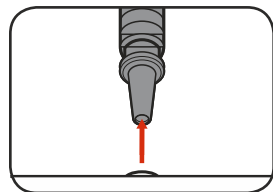
4. Press the on/off switch backward into mode "II" to inflate high volume items.



5. Once the item is completely inflated, press the on/off switch into the off position "0".



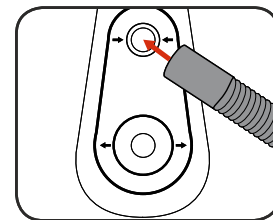
6. Remove the adaptor from the inflatable item.



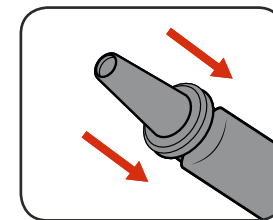
7. Deflating High Volume Items

The air compressor can also be used to quickly deflate high volume inflatable items.

1. Remove the high volume air hose from its storage position and insert into the device air inlet.

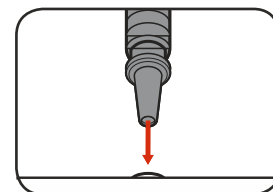


2. Attach 1 of the 3 high volume adaptors to the high volume air hose.

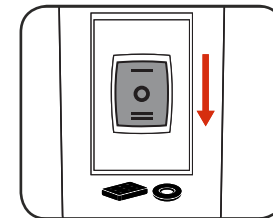


3. Insert the adaptor into the inflatable item.

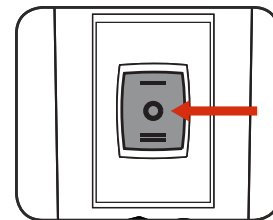
Note: If the inflatable item has a cap or air lock, ensure it is removed or unlocked to allow air to flow out of the item.



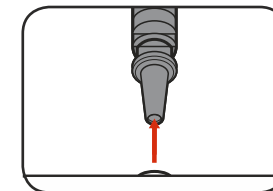
4. Press the on/off switch backward into mode "II" to deflate the item.




5. Once the item is completely deflated, press the on/off switch into the off position "0".



6. Remove the adaptor from the inflatable item.

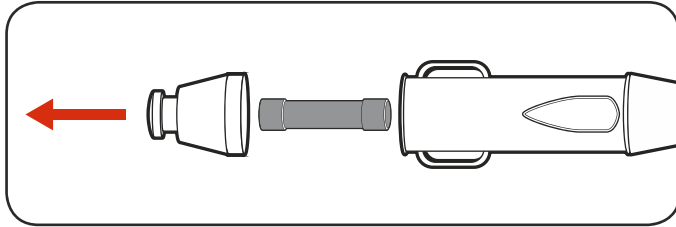


8. Replacing Fuse

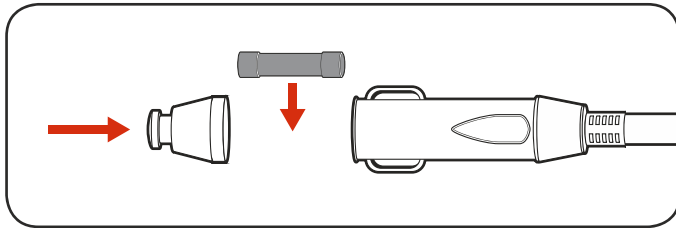
 **WARNING:** Ensure the device is switched off and disconnected from the power source before performing any of the following steps.

The 12v socket is fitted with a 10A fuse to protect the air compressor. If the compressor has stopped working and no lights or LED's illuminate, the fuse may need to be replaced.

1. Unscrew the top of the 12v socket to expose the fuse.



2. Replace the fuse and screw the top back onto the 12V socket.





9. Trouble Shooting

Problem	Cause	Solution
The compressor does not start	Compressor not connected to a power source	Connect the 12V socket to a 12V DC outlet
	Insufficient supply voltage	Try another 12V outlet
	Fuse needs replacing	Replace Fuse
The compressor starts but there is no pressure	Loose hose connection	Check the compressed air hose and adaptor and replace if necessary
	The seals are damaged	Check the seals and have any damaged seals replaced by a service centre
LED torch does not turn on	Compressor not connected to a power source	Plug the 12V socket into a 12V outlet
Low pressure items (such as sporting equipment) not fully inflated	Internal line pressure of the inflation hose exceeds preset pressure	Increase the preset pressure on the LCD display & switch the compressor off

Maintenance

10. Cleaning & Maintenance

 **WARNING:** Before cleaning your compressor or carrying out any maintenance procedures, ensure the compressor is switched off & disconnected from power supply.

 **WARNING:** Wait until the compressor has completely cooled down to prevent burns.





Cleaning

- Keep the ventilation vents of the compressor clean at all times, if possible, prevent foreign matter from entering the vents.
- After each use, blow air through the compressor housing to ensure it is free from all dust particles which may build up. Build up of dust particles may cause the compressor to overheat and fail.
- if the enclosure of the compressor requires cleaning do not use solvents but a moist soft cloth only. Do not let any liquid get inside the compressor; do not immerse any part of the compressor into a liquid.


Note: Blaupunkt will not be responsible for any damage or injuries caused unauthorised repairs of the compressor or mishandling of the compressor.


IMPORTANT: Store the compressor only in a dry location which is not accessible to unauthorised persons. Always store upright.

Description of Symbols

V	Volts	W	Watts
dc	Direct current	mA	Milliamperes
	Warning		Electrical Emissions Conformity (EMC)
	Read instruction manual		Indoor use only

Caring for the Environment

 Power tools that are no longer usable should not be disposed of with household waste but in an environmentally friendly way. Please recycle where facilities exist. Check with your local council authority for recycling advice.

 Recycling packaging reduces the need for landfill and raw materials. Reuse of recycled material decreases pollution in the environment. Please recycle packaging where facilities exist. Check with your local council authority for recycling advice.

